

Message from The President



Off we go again! Another season starts at Elgin Museum, with a flourish, as we opened the Pictish Stone Exhibition featuring the Dandaleith Stone. There is a report in the newsletter giving much information about this amazing find and how it has reached us to become a major display. We have also had one of our busiest opening days on Saturday 26th March with over 350 visitors in the five hours we were open (details inside).



Dandaleith Stone

Thanks to generous donors we approach this next year with enthusiasm and vigour. It is a huge boost to our morale to know that we have support for all we do for tourism, education, history and research and everything else we are asked to do.

Beyond the Museum we still are active in education for all and also local projects such as Castle to Cathedral to Cashmere. And we have a busy season planned for 2016 with free entry continuing and an interesting programme of events.

Many thanks to all the volunteers who have continued their work over the winter period. Cataloguing, researching and answering questions are never ending but most interesting. Please do come along and give us some hours if you have an interest in a subject. And we are always looking for more volunteers to meet and greet our visitors.

Grenville

The Arrival of the Stone



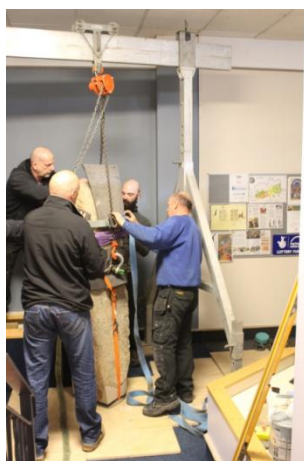
The first problem



The stone uncovered



A tight squeeze



Ready for the lift



Almost there



Getting ready for the stones



Burghead and Kinnedar stones



Graciela Ainsworth explains the symbols



Members at the first viewing

Archaeology report

Treasure Trove

Among other items from Spynie and Duffus, the Museum had applied for a Neolithic/EBA excavation assemblage from a dig at Rothies Golf Club. This consists of only a few finds but includes an almost intact Bronze Age beaker. This has been recommended to the QLTR for allocation to us and will be an important addition to the museum's collection of artefacts from this period.

Dandaleith Stone

The stone arrived at the museum on 1st March. It was brought by Graciela Ainsworth and two colleagues from Edinburgh where it had been conserved. Also returned were the majority of the museum's existing carved Pictish/Early Medieval stones that had also been with Graciela for conservation.

With the help of the Elgin Marble Company the Dandaleith stone was lifted into position the following day. The Elgin Marble Company provided a lifting frame and manpower free of charge and their assistance is greatly appreciated.



New shelving to display the museum's carved Pictish/Early Medieval stones had been manufactured by GA and was assembled in the Rear Hall and the stones fixed in place. Two Burghead bull carvings together with a cast of another Burghead

bull have been mounted on the wall. The display shelving has integral lighting that illuminates the stones very well. The overhead lighting has been configured to illuminate the entire reimagined display.

Brown coir matting covers the dais and new interpretation panels are in place.

On the Pictish Stone Exhibition launch night on 24th March, Grenville Johnston, our President said in his address :

Thank you all for coming along this evening. It's wonderful that so many of you could join us on this special night.

Let's begin by stepping back in time, to 2013, when a magnificent discovery was made in Moray – a new Pictish stone was unearthed on farmland near Craigellachie, a rare and exciting object with its unusual carvings and in superb condition. Elgin Museum was lucky enough in 2014 to be awarded the stone by Treasure Trove: the Dandaleith Stone (as it came to be known) became part of our collection and so our challenge began.

This evening marks the culmination of nearly 2 years of hard work which saw not only the Dandaleith Stone being conserved, but our whole Pictish carved stone collection being revisited and presented in a new and exciting way. Many people have helped us to get to this point, and tonight is as much about showing our appreciation to them as about finally unveiling our new display.

And so, a vote of thanks.

Firstly, we are grateful to the landowner, Mr Robertson, for generously allowing the stone to be stored at his farm for over a year before its removal for conservation.

To our own Edna Cameron, for doing such a fantastic job at sourcing the funding needed to make this exhibition possible. And to our funders: Heritage Lottery Fund, AIM, Art Fund, Pilgrim's Trust, and Aberdeenshire Council Archaeology Service.

The project team in the museum: Edna, Janet, Bill, David and Claire, and all of the other volunteers who have helped make the exhibition possible.

Darroch & Allan, for the great work that they've done in getting the building shipshape, as well as being on hand at a moment's notice.

To Lynne Strachan for her work on the interpretation panels.

Graciela Ainsworth and her team down in Leith, for all their help and guidance in the conservation work and creating such a superb display for us.

To Paul Henderson and his team at the Elgin Marble Company, who generously donated their time, manpower and machinery to get the Dandaleith Stone into the building.

And lastly, we thank the finder, Andy Johnstone, without whom we would not be here today.

I would now invite Andy to our open our new exhibition – I hope you all enjoy it as much I do.



Claire's 'Pictish' biscuits

As well as the formal launch, the Museum opened specially for members to allow them to view the Stone before the opening to the public. All praised greatly the new display in the rear hall. Refreshments were provided for members, including 'Pictish' biscuits cooked by Claire Herbert of Aberdeenshire Council Archaeological Service, who is also a Moray Society Board member. Claire was a great help, also, in getting the Stone

to Elgin.

David Marquardt.
Archaeology Representative

Opening Day 26th March

As well as the excitement of opening with our new Dandaleith Stone, we also had the opening of a small exhibit in the Upper Gallery about Albert Bonici, who did much in the Sixties and Seventies to further the entertainment scene in the North of Scotland.

The exhibit was researched and assembled by David Dills, who hails from San Francisco. He had heard much of the 'Beat' scene created around the Park Cafe and the Two Red Shoes Ballroom, which were opened by Albert Bonici and as well as the publishing of a blog (scotbeat.wordpress.com), he wanted to display some of the artefacts from the time. To commemorate the exhibit, a local band from that time, Windy Miller came to play a short set to give us a flavour of the era. It gave an excitement to the opening day, especially when three members of Johnny and the Copycats, another group from that time, also played a few numbers.



Windy Miller on 'stage'



Johnny and the Copycats

Thanks are due to the large numbers, over 350 on opening day, who gave generously to our donation boxes.

The War Cabinets

As part of the ongoing display commemorating the 1st World War, the displays have changed to tell of 1916: the war has been raging for over a year. Hundreds of thousands have been killed and wounded, countries all over the world have been dragged in, naval blockades have seen hunger and rising food prices and the initial patriotic volunteering has dwindled until conscription has had to be introduced. Normal social divisions are changing rapidly.

The museum's WW1 displays have been changed to reflect some of the major challenges faced by the protagonists during the war. The terrible carnage of The Somme and Verdun, the development of ever more lethal weapons, the propaganda used to persuade people to sacrifice even more are explored in the displays. How people coped at home, the treatment of shell shocked soldiers, bitter humour in the trenches, the changing role of women are all examined. Some of the items on show are from the museum's collection while others have been loaned by Moray Society members and visitors. Many thanks to everyone who helped us put the display together and find out the information we needed. We hope our visitors this year find these cases interesting and informative.



Mary Shand and Jenny Cook

Education and Outreach

March 2016

With all the wonderful changes that have been happening at the museum over the winter we have been unable to have school and community groups visiting. However we have been really busy with outreach sessions over the last three months. Groups visited have included BALL groups, sheltered housing groups and a local childcare centre, along with the usual selection of schools. Topics have ranged from 'Dinosaurs' to 'Local Archaeology' with more or less every subject in between! These sessions have been really popular, with new and repeat visits planned for the next three months.



Plans are complete for our 'Take Over the Museum' events 2016. We have two local schools who will be taking over the museum – Mosstowie Primary School and West End Primary School – doing all the jobs that our wonderful volunteers do – front of house, social media and administration, guided tours and pop-up exhibitions to name a few jobs. The dates for these events are as follows:

Mosstowie Primary School: Wednesday 27th April 10am-12.30pm

West End Primary School: Monday 9th May 10am-2.30pm

We would love to see as many members as possible come along and support the children as they have worked hard to make sure that they are very knowledgeable about the museum and its collections. We are also inviting local councillors to come along and see how the museum works closely with school and community groups.

Our Festival of Museums event is planned for Saturday 14th May this year and is based on the theme of 'The Picts – Uncovering our Past' – linking in with the new Dandaleith Stone and stunning Pictish Stone display. We have another packed programme planned, with a variety of activities for families and a Re-enactment group – 'Battlescar' – coming along to set up a Pictish encampment in the museum side hall. Burghead Headland Trust have very kindly let us borrow some Pictish costumes but we are looking to make more for our volunteers. If you are able to help with costume making or on the day, then please let us know at the museum.



Our Family Drop-In sessions are all planned for the school Summer holidays this year. Keeping to the theme of 'The Picts' we have a variety of crafty treats for families to have a go at: Pictish Stones, jewellery and shields to name a few. These activities are free to drop in to and will run every Thursday through the Summer holidays.

For our junior members there is a special project planned for this year. The Young

Marvels will be involved in making 'Trades banners' based around the 'Incorporated Trades of Elgin' and the resources that we have in the museum. The project will culminate in a march through Elgin following a route that will take the children around some of the key areas where Trades were carried out in Elgin. We are joining with the C2C2C project for this so it should be a wonderful event.

If you are able to help with any of the events and activities then please let us know at the museum, we would be delighted to see you. You can also follow us via social media, we have a Twitter feed and a Facebook page, just search for 'Elgin Museum'.

Di Hannan

Museum Assistant - Newsletter Update, March 2016

It really was a crazy rush to get everything ready in time for re-opening – to ensure all the text was accurate and corporately presented, delicately clean artefacts and cases, mend *Elginia mirabilis's* horn (*thank you, Davie*), photograph exhibits in upstairs cases for the downstairs brochure (for those who cannot access upstairs with the absence of a lift), polish the stair treads (*thank you Peter*), organise catering for the Dandaleith preview (*fabulous homemade 'Pictish' design cinnamon biscuits - thank you Claire*), mass cleaning,

Main Gallery 'People and Place Exhibition'

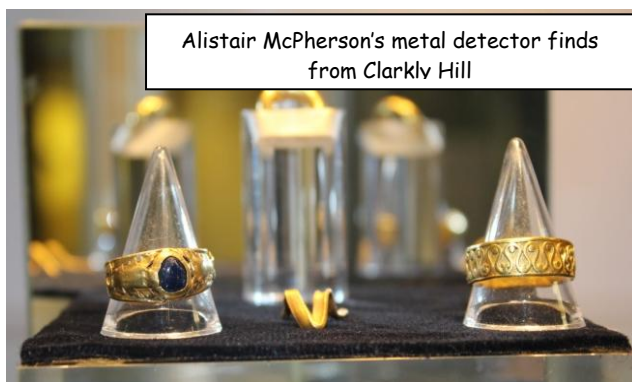
Janet and I have spent a good 60-70 hours updating the cases and more importantly, the text to the 'People and Place' exhibition cases on the left hand side of the main gallery describing 1,000yrs of Moray history. I hope that you will all notice the recently acquired and restored oil painting of **John Shanks**, cicerone of Elgin Cathedral. The painting complements the plaster model of Shanks and the silver snuff box he was presented with for his valuable work in restoring the front entrance steps to the Cathedral. It was rather hair raising emptying the case and hanging the painting, avoiding any real misadventures but we are pleased with the finished effect. It was particularly exciting unwrapping the painting from the Conservator and seeing the vast improvement to the painting from the state it originally arrived in. We owe thanks to the Woodmansterne project for funding the restoration and to Owen Wilson for his precise work.



Behind the Scenes with the collection

I have thankfully caught up with accessioning donated items into the museum collection and will be utilising volunteers throughout the year to assist with the documentation and photographing of recently acquired artefacts. Morag MacDonald has skilfully displayed some of 'the best' archaeological finds from Clarkly Hill - make sure you don't miss

out and take a look when you visit the new Pictish stone display.



David Marquardt kindly installed new acquisitions in the 'Birnie' case. Fraser Hunter has taken the objects previously on display back to Edinburgh as part of his post-excavation work. We don't expect to have a Birnie display back before 2017. This will also give Fraser time to get over the work involved with the 'Celts' exhibitions, joint projects between NMS and the British

Museum, and to provide us with a different selection of finds from this fascinating site.

Richard Winfield has continued the work of Mary Allan and been hard at work inputting about 4,000 object entry forms into an Excel spreadsheet to keep better track of all items coming into (and exiting) the museum.

In the Stores

I am very grateful to Graham Robertson for creating essential, additional storage space in the North Store. I hope I may be able to use one of these tables to label objects throughout the 'open' season when it is unsuitable to leave items on the main office table.



Query:

Did any of our readers bring this painting of Innes House to the museum between 2003-10?

I have cleared most of the gangways in the North Store which were heavily cluttered and therefore dangerous; this was made possible by Graham's additional storage but also by accessioning or removing un-numbered pictures from the art rails, disposing of broken glass and unused frames and having pictures and frames repaired or re-glazed as necessary so that the art collection can be safely stored.

Upstairs Exhibition Cases

Sara Marsh and Roger Prendergast worked well together to produce an exhibition based on The Incorporated Trades of Elgin and the collection recently donated when the remaining Trades dissolved. Richard Lochhead voiced his approval of the display on his recent visit to the museum this year.



Above: The Incorporated Trades exhibition



Milan Ardis has put together a fascinating and gruesome 'fantasy dinner' using natural history from the collection, which should appeal to children and adults alike. You will also see that Mary Shand and Jenny Cook have put together a very moving exhibition depicting life and events in 1916, during World War I.

Art Exhibitions 2016

The season of changing art exhibitions begins with the Garmouth and Kingston group of local artists. There was a private viewing of this on Friday 25th March (*thank you to Heather Cruickshank and Edna Cameron for manning this and to Mary Shand for creation of the poster*).

| | |
|----------------------|-------------------------------|
| 26 March - 29 April: | Garmouth & Kingston Art Group |
| 3 May - 24 June: | Donna Shaw |
| 28 June - 5 August: | Woodend Wood Engravers |
| 9 August - 16 Sept: | Local Quines |
| 20 Sept - 29 Oct: | Raymond Clive |

Side Hall

You may have appreciated the black and white photos of old Moray in the side hall but wished there was more information available. Roger Prendergast, Sara Marsh and I have completed a catalogue that is now available in the side hall for reference; please have a look when you attend the AGM. A number of the photos and lantern slides were loaned to Elgin Library for the Castle to Cathedral to Cashmere project.

Library

A new team of volunteers, Sara Marsh, Lesley Durrant, Jamie Barron, and Sue Buxton have started afresh to catalogue the books in the museum, starting with the extensive library in the main office. They have made steady progress, and are working to complete the mission on which Catherine Macleod, Heather Cruickshank and Morag MacDonald made such a good start. The new library group has just finished the 'Moray' books in record time. Once the catalogue is digitised it will be available to all volunteers and researchers.

Researchers

We have continued to be a useful resource throughout the winter time. As well as use for Di Hannan and Morag MacDonald's outreach projects we have been used by researchers and for genealogy queries and been a local facility for metal detectorists to consult and submit their finds. One researcher came from afar to examine documents in the collection from 1500-1700 AD; another, archives pertaining to the Hudson Bay Company; and another from Bute, the carved stone balls in the collection.



Milan Ardis and Louise Hanwright have scanned and printed copies of most of the photographic prints in the museum collection (*thank you Liz Trevethick for scanning our lunulate slides*). They have cross referenced the photos to Jenny Main's 'Elgin from Old Photographs', 'Elgin People' and 'Elgin' books and they are now in folders in the office, available for all.

*Right: Lantern slide of Brodie Castle, July 1888
(note the stonework revealed)*

Geology

A Geology group, including David Longstaff, Alison Wright, Janet Trythall and Heather Travers has been formed to help decide which uncatalogued geology should stay and which should go. The objects that are being kept will need to be accessioned, labelled and documented.

I would like to say a big THANK YOU, to all volunteers, but especially to Janet Trythall for your flexibility, hard work and support during the past winter season.

**Kind regards,
Heather Townsend, Museum Assistant
29.03.2016**

Natural History Collection

During the past winter, the reorganisation of the Museum's natural history collections has proceeded. Following the completion of work on the collections of preserved birds and birds' eggs, the focus has now turned to the collections of Lepidoptera (butterflies and moths).

The Museum holds several collections, housed in cabinets in variable states of repair. The specimens housed within are of equally variable quality, perhaps unsurprising as some are approaching 100 years old. The collections comprise many specimens of British butterflies and moths, and also a large number of exotic butterflies from foreign lands. Unfortunately the great majority of these insects have no accompanying data to indicate where and when they were collected.

At the start of the process, Keith Bland from the National Museums Scotland (NMS) paid two visits to Elgin Museum to assess the worth of the collections. It was his view that the small amount of British material with accompanying data should be incorporated into the NMS British Lepidoptera Collection. Much of this material has now been transferred to NMS. Keith further recommended that the remaining specimens, from the various Elgin collections, should be brought together into a single collection of British Lepidoptera which might be used for identification purposes to aid local amateur entomologists.

With regard to the exotic (non-British) butterflies, the lack of data ensures that these have little scientific value. NMS is only interested in taking the small amount of material with locality information.

The first task undertaken this winter was the reorganisation of the British butterflies. Many of these are in good condition and the specimens of each species from all the collections have been brought together into one collection housed in a single cabinet which is in a good state of repair. The entire collection has been re-labelled.



With only about 65 British species, mostly easily identified, this task was relatively straightforward. However, with around 870 species, many of them highly variable, the re-organisation of the British moths has provided a much greater

challenge! Luckily we were able to obtain help from Roy Leverton, a national authority on British moths, who visited the Museum to check the identifications.

Roy was also able to indicate a small additional number of specimens that he felt we should transfer to NMS.

The next stage is the amalgamation of the best specimens of each species from the various collections into a single British moth reference collection. This process will shortly be getting under way, and many hours of careful work lie ahead.

When the work is completed, the Museum will hold a reasonably comprehensive collection of British Lepidoptera, to which members of the public who display an interest will be permitted access.

Martin Cook
23/3/2016

Moray Society Prize Draw

The Prize Draw has now been running for fifteen years and during that time has diverted almost £15,000 into the Moray Society current account. This total includes donations submitted through the Prize Draw fund but does not take into account any further income accrued from Gift Aid generated by eligible donations. This has been of considerable benefit to our daily running expenses and continues to be so, given the huge inflationary price rises on all our utility bills.

Tickets for the draw are only available to Moray Society members due to current legislation. I would like to ask any member who does not have a ticket to consider the benefits derived by the Society from those sales. There is no limit to the number of tickets available.

The price of the tickets remains unchanged and at present there are 78 tickets in circulation at £10 each. These are all eligible for the 12 prizes during their lifetime (1 year/4 draws with 3 prizes each).

All income generated by the draw goes directly into Moray Society funds apart from the prize money paid to the lucky ticket holders.

Please address any questions or applications to me at the Museum (or email mabritch@keme.co.uk, or tel 01309 673597)

Moray Society Prize Draw

Please allocate me tickets in the Moray Society Prize Draw @ £10.00 each.

*I enclose my payment of £.....

*Please forward me a standing order mandate

Name.....

Address.....

Post Code..... *please delete if inappropriate

Please address any questions or applications to me at the Museum (or tel 01309 673597).

Ritchie Mabon,
Prize Draw Co-ordinator

Museum Outreach Development for Older People Project

This project was set up in June 2015 to offer older people an opportunity to become more stimulated and socially connected through visits to the museum or via group outreach sessions. The premise was to address the targets of the "Living Longer, Living Better: Older Peoples Strategy".

It has been a bit of a departure for me from working behind the scenes to going out to new places within Moray with my box of fascinating things! There are already many well established groups in Moray and getting an introduction initially took some time; once I got to meet a few of the groups, there was an influx of phone calls and emails asking for the service.

The visits are often based around local archaeology. This means researching the collection to see what has been found in the area I'm going out to and taking



objects that will pique interest, and provide lively discussion. For the groups who come to the museum, we supply teas/coffee and take out objects that the public don't always get to see, or give a personal tour around the museum and talk about Old Moray, (as shown in the photos in the side hall). We want to show the museum as a viable venue for older people group visits, but more importantly, we want older people to feel

valued in society and to know that they still have a positive contribution to make to the communities they live in. Some people in the groups have enjoyed the sessions so much that they decided to become volunteers at the museum, attending our training sessions earlier this month.

Getting ready for the grand opening hasn't just been about outreach work, I have been dizzy watching Janet and Heather become whirling dervishes in their quest for making sure the museum was good to go and found myself emulating their enthusiasm for updating text, sorting out displays and screaming for glass polish.

However, the outreach project continues, and training volunteers in various aspects of collection care has become incorporated into this work. Future training dates are planned for working in the stores or dealing with heritage/genealogy questions that come in. If anyone is interested in taking part in this please contact me on changefundmoray@outlook.com.

Finally, Claire Herbert and I have been talking about an outing for volunteers and members of The Moray Society, to see the Stone Circles and Pictish stones in Aberdeenshire. We have arranged a date for the 22nd May (a Sunday) and I am still looking for names from those who are interested in attending. Please note that there will be some rough terrain to get around so you will need to be relatively fit and active, and it will be for the whole day with breaks included.

Morag MacDonald
Museum Project Assistant
March 2016

Please Note: Papers for the Annual General Meeting will be available to view in the Museum from Monday 25th April.

Annual General Meeting – Agenda 2016

**Notice of The Moray Society Annual General Meeting
6.30 pm Friday 29th April 2016 at Elgin Museum**

Agenda:

1. Welcome from the President, Grenville Johnston (Chair)
2. Apologies for absence
3. Minutes of AGM 2015 - for approval
4. Matters arising from above
5. President's written report on the activities of the Society (Grenville Johnston)
6. Receive the Financial Report, including Accounts for the year ending 31st December 2015 and report of the independent financial examiners, Ritsons, Chartered Accountants, Elgin (Treasurer and Company Secretary, Ken Ferguson)
7. Appointment of Ritsons, Chartered Accountants, Elgin as independent financial examiner for 2016
8. Board membership - annual election
The following existing Trustees are resigning and standing for re-election having been duly proposed by two Ordinary Members:

| | |
|--------------------|-----------------|
| Grenville Johnston | Angela Monro |
| Janet Trythall | Marion Yool |
| Ken Ferguson | Rebecca Russell |
| Bill Dalgarno | Phil Dacre |
| Edna Cameron | Mary Shand |
9. Special Resolution to consider transfer by donation of Hindu sculptures to National Museums Scotland (see supporting report)
10. Special Resolution to consider transfer by donation of Elgin Cathedral stone to Historic Environment Scotland, Elgin Cathedral (see supporting report)
11. Fixing of annual subscriptions for the categories: Ordinary, Family, Junior, Student, Life, Corporate membership. The Board recommends the changes:
Ordinary member not paid by Standing Order, increase to £30
Family member not paid by Standing Order, increase to £50
Junior (Young Marvel) - a single joining fee of £1, not an annual subscription.
12. AOCB
13. Close
The AGM will be followed by a lecture at 7.30 pm: **Scotland's Wildcats** by David Barclay, Cat Conservation Project Officer, Royal Zoological Society of Scotland, Highland Wildlife Park, Kincaig. This is free and open to the public, but donations are welcome.

Annual General Meeting – Draft Minutes 2015

The Moray Society Annual General Meeting 6.30 pm 24th April 2015 at Elgin Museum

1. Welcome from the President (Chair)

Grenville Johnston, President, welcomed those present.

2. Present and absent (name lists in file)

32 members present: 8 apologies for absence

3. Minutes of the AGM of 2014 – accuracy: Agreed nem com

4. Matters arising from AGM minutes 2014 – none

5. President's report

Grenville Johnston referred to the regular updates to members in the Newsletters, and said that for this reason, reports from the individual committees would not be included this AGM. He highlighted the following activities and achievements for the year:

- Moray Council grant – there is serious concern that we have not yet received any financial support from Moray Council. Last year we received £13,200. The basis for a grant has changed and the infrastructure is in flux with the assignment of "Museums" to "Economic Development" (from "Education"). We are in negotiation but the required format of an application does not readily match the Museum's activity nor its actual benefit to Moray.
- The Museum has received full Accreditation from Arts Council England, via Museums Galleries Scotland, for the next 3 years.
- Recognition Fund Curatorial Assistant post (14 months) - Dr Sue Beardmore was thanked for her work on the Recognised fossil collection and organising the 2015 conference.
- Outreach/education – Di Hannan was thanked for her work with schools and groups. Funding is in place for her post to continue, with a new emphasis on intergenerational activity. The Museum was in the finalists for the Telegraph Family Friendly Award, aided by the enthusiasm of the front-of-house volunteers.
- Thanks were also given to Heather Townsend (Museum Assistant), Edna Cameron (Fundraising Volunteer), David Marquardt (Archaeology Volunteer), Ritchie Mabon (Buildings Officer and much more), Publicity Officer (Mary Shand) and to all volunteers, Committee and Board members for their various and invaluable contributions. A full programme of activities and lectures was arranged for 2014/15 and plans already in place for 2015/16.
- Membership stands at c.306 with a new Junior membership proposed.
- No 3 High Street is still without a tenant, and so not generating income.
- CARS funding – we have been allocated 50% of the cost of external works to the Museum's buildings. If we can find the other 50%, this should be a substantial legacy for the Society.

6. Financial report – see statement of income/expenditure and balance sheet to year end 31/12/2014 (Extracts from full accounts examined by Ritsons and accepted by OSCR – full copies can be seen on request). See notes prepared by Ken Ferguson, Treasurer and Company Secretary.

In summary, while our finances show a modest surplus in unrestricted funds, we still require to have some £50k annually to run the museum, and our utility and maintenance costs increase. The majority of our funds are restricted and not

available for general maintenance and outgoings. Apart from the salaries of the part-time Museum Assistant and Janitor, any wages are funded from project grants. Donations have been most welcome, but they are unpredictable, and we are uncertain of future funding from Moray Council or No 3 rental income. A computer beyond repair and funded through HLF was written off, reflected in the depreciation figure.

Adoption of Treasurer's report: nem com.

Ken Ferguson was thanked for his work on our behalf, particularly handling the complexities of our grant/ring-fenced funding and having our accounts bang up to date with OSCR.

7. Appointment of Ritsons, Chartered Accountants, Elgin as independent financial examiners for 2015 – agreed nem com.

8. Board membership

(a) Resignations:

Elizabeth Robinson

Councillor Patsy Gowans, by reason of Moray Council's no longer wanting a seat on the Board.

(b) As explained in the notes for the notification of the AGM, it was agreed that the existing Board be re-elected as Directors **for one year only** under the existing Constitution:

Grenville Johnston (President)
Janet Trythall (Vice-president)
Ken Ferguson (Treasurer and
Company Secretary)
Bill Dalgarno
Edna Cameron

Mary Shand
Angela Monro
Marion Yool
Rebecca Russell
Phil Dacre

Proposed: Brian Chandler Seconded: Jennifer Shaw. Agreed nem com.

9. Special Resolution to adopt the new Articles of Association in entire substitution for the existing Memorandum and Articles of Association by which the Society was incorporated as a Guarantee Company on 9th September 1987 and which was amended on 30th April 1993.

Proposed by the Board. Agreed nem com.

10. Fixing of annual subscriptions for the categories: Ordinary, Family, Junior, Student, Life, Corporate membership.

It was adopted nem com that the subscriptions should remain unchanged, and the new Junior membership be set at £1 per annum.

10. Board meeting dates – agreed that they should be set by the Board.

11. AOCB: none

There being no other business, the meeting closed at 1900.

It was followed by drinks and nibbles, and at 1930 by a lecture, **The Dandaleith Stone: the story so far**, by Claire Herbert and David Marquardt.

Annual General Meeting - Notes for Agenda items 9 and 10:

The Museum owns two collections which because of their size and weight have almost entirely been confined to the stores or cellar. Neither is therefore available to the public, and only with great difficulty to researchers. After several years of consultation with senior staff at National Museums Scotland and Historic Scotland (now Historic Environment Scotland) respectively, the Board recommends that members agree to the donations as outlined below.

Agenda item 9. Indian stone sculpture

Extract from letter from Friederike Voigt, Senior Curator, Middle East & South Asia, Department of World Cultures, National Museums Scotland, 29/6/2015:

"As discussed I am writing with regard to a possible acquisition of the following large stone sculptures from India by National Museums Scotland from Elgin Museum.

| | Elgin Museum acc. no | Object, material | Place | Period, date |
|---|-----------------------------|--------------------------|-----------------|---|
| 1 | 1852.10 | Vishnu, black stone | N.E. India | Pala period, 10 th c. |
| 2 | 1852.11 | Vishnu, black stone | N.E. India | Pala period, 10 th c. |
| 3 | 1852.12 | Vishnu, black stone | N.E. India | Pala period, 10 th c. |
| 4 | 1852.14 | Vishnu, black stone | N.E. India | Pala period, 10 th c. |
| 5 | 1852.15 | Lakshmi, volcanic tufa | Indonesia, Java | 10 th -11 th c. |
| 6 | 1852.16 | Lintel arch, black stone | N.E. India | Pala period, 10 th c. |
| 7 | 1978.1461 | Nandi, sandstone | Indonesia, Java | Pre-700 AD or c12 th c. |
| 8 | 1978.1464 | Heruka, stone | N.E. India | Pala period, c8 th -9 th c. |

Following a review of the museum's stores, in which colleagues from the Natural Science department at NMS were involved to advise on the rationalisation of the bird and fossil collections, you contacted Henrietta Lidchi, Keeper of World Cultures department, in February regarding the sculptures mentioned above as Elgin Museum is concerned about the limited resources to store and display them, and you were looking for advice to decide on how to proceed with these objects in the future. Henrietta Lidchi and I came to visit Elgin Museum on 24th April to view the sculptures in person, and you kindly provided access to the archival material on their acquisition and the research which has been carried out in the past.

Four of the sculptures (no 1-4) we saw had recently been relocated to improve their storage conditions. However, due to their weight it had been challenging to lift them into their position. We found them leaning against the wall as well as on each other, separated only by cardboard. One of them sits on its pointed basis and is therefore unstable. It has also to be moved in order to access the slab behind it. The other four sculptures are stored in different locations, together with geological or archaeological material.

At NMS, we would also be able to provide appropriate storage at National Museums Collection Centre in our large object store. The sculptures would be stored in the crates built by NMS for transport. Individual crates would also enable easy access for researchers and visitors to see them as they can be moved using a fork lift. They would be stored together with similar material of cultural and historical importance.

The majority of the sculptures (no 1-4, 6) date from the Pala period (8th-12th century) in Northeast India and are in good condition. They were given to the museum by J W Grant of Elchies in 1852 who had spent most of his life in India in the service of the East India Company. They show the characteristic features of sculpture from this period, being elaborately carved of highly polished black stone; four of them depict a figure of Vishnu on a faceted plinth, while no 6 is a lintel arch. Two of the other three figures were donated by another local, Dr Taylor; they are in less good condition.

In 1955 and 1958, NMS bought from Elgin Museum two sculptures and a niche from Gaur, respectively which originally were part of the donations of these two people. One of the sculptures, A.1955.207, is currently on display in the permanent gallery 'Inspired by Nature' at National Museums of Scotland. It is displayed in a group with other important pieces of Indian sculpture from our collection, which in total comprises 125 figures, steles and other architectural elements. The Pala period is represented in our collection by a number of significant pieces which would provide context to the ones at Elgin Museum and help further research on them so that they can be better understood. Furthermore, we are currently reviewing our Indian collections and developing a research project focussing on the contributions by India-returning people such as J W Grant and J Taylor to the social and intellectual life in Scotland, in which the sculpture could be aptly included.

We would be delighted to receive this gift to the National Collections given that we are unable to pay the market value. We will be happy to discuss ways of how we can provide advice and support to Elgin Museum if the Management Committee agrees in principle to the proposal of transferring the sculptures to us. This generous gift will not only make them available to a broader audience but would of course be acknowledged by NMS in all future research and publication of the objects."

Internal discussions are taking place at NMS, and it may be one or some of the sculptures could be on public display if transferred to their care.

Agenda item 10. Elgin Cathedral stone

The collection comprises some 58 fragments of architectural stone, almost all of which are on palettes in our cellar, a location which has for many years been recognised as totally unsuitable. We have tried in the past to interest Historic Scotland in them as owners of Elgin Cathedral, but progress only began after a visit in 2012 from Dr Rona Walker, HS Regional Collections Manager (North) and colleagues, through an interest in our stained glass fragments from the Cathedral, associated with the same excavations in the 1970s. These have been loaned, undergone scientific analysis and are on display in the Cathedral. The stones were subsequently recorded for HS by specialist Mary Márkus of Archetype Historic Buildings Conservancy. The Cathedral has undertaken a major reorganisation of its carved stones, putting many more on display on the main Cathedral site and making room in Dunfermline House ("The Bishop's House") for more; space has been identified for our stones, which, while they would not be part of the normal visitor experience, would be available for researchers and special interest groups. Anyone wanting to see the reports on the stones, the glass, or the account of someone at the original dig, please ask me.

Janet Trythall,
Vice-president, The Moray Society
29/3/2016

Annual General Meeting – Proxy Voting Form

The Moray Society (“the Society”) Form of Proxy Voting 2016

I,
of.....,
being an *Ordinary Member of the Society or *one, aged 18 years or over, of a
Family Membership or *the Corporate Membership representative of
.....
hereby appoint the chairman of the Annual General Meeting
or*.....,
of
as my proxy to vote for me on my behalf at the Annual General Meeting of the
Society to be held on 29/4/2015 and at any adjournment thereof.

This form to be used in favour of/against the resolution(s),*

| Agenda item | For | Against | Vote withheld |
|---|-----------|-----------|---------------|
| 3. Minutes 2015 AGM | | | |
| 6. Financial report 2015 | | | |
| 7. Independent Financial Examiner 2016 | | | |
| 8. Election of Trustees | | | |
| 9. Proposal to donate Hindu sculptures to National Museums Scotland | | | |
| 10. Proposal to donate Elgin Cathedral stones to Historic Environment Scotland, Elgin Cathedral | | | |
| 11. Fix annual subscriptions (unchanged except) | xxxxxxxxx | xxxxxxxxx | xxxxxxxxxxx |
| Ordinary member not paying by SO £30 | | | |
| Family member not paying by SO £50 | | | |
| Junior (Young Marvel) single joining fee £1 | | | |

** to be deleted if not required, or amended if it is required*

Signature of member appointing proxy.....dated.....

To be valid, this Form of Proxy, once signed and dated, must be lodged at Elgin Museum at
least 48 hours before the start of the General Meeting referred to above

Do you remember?



Dates for Your Diary

Sat 26th March to Fri 29th April:

Garmouth & Kingston Art Group

Wed 6th April: Children's activity – Queen Elizabeth 90th Birthday

Fri 29th April: Moray Society AGM 6.30pm followed by
"Wildcats" – a talk by David Barclay, Cat Conservation Project
Officer of Highland Wildlife Park.

Tue 3rd May to Fri 24th June:

Donna Shaw Art Exhibition

Fri 13th May: Night at the Museum (Details to be confirmed)

Sat 14th May: Festival of Museums – "The Picts – uncovering the Past"
11am to 3pm

Sat 18th June: Coffee Morning in Austins Tearooms

Tue 28th June to Fri 5th August:

Woodend Wood Engravers exhibiton

Tue 9th August to Fri 16th September:

Local Quines exhibition

Tue 20th September to Fri 29th October:

Raymond Clive art exhibition

School Holiday activities:

5th, 12th, 19th, 26th July and 2nd and 9th August: 11am to 1pm
Young Marvels – Incorporated Trades project

7th, 14th, 21st, 28th July and 4th and 11th August: 11am to 2pm
Families drop in activities - Early Scottish tribes



1 High Street, Elgin, Moray, IV30 1EQ – Tel: 01343 543 675 – Email: curator@elginmuseum.org.uk
ELGIN MUSEUM – Scotland's oldest independent Museum – Established 1836

The Moray Society: Company No 106529 Charity No SC017546