

## President's Report



Most of you will have seen the Museum surrounded by scaffolding. This CARS project, a conservation opportunity, came to us with generous funding from both CARS and Moray LEADER programme and the Board decided to proceed. Inevitably it has thrown up the usual additional problems that we all experience with roofs, slates, rones and the rest. But it is going to repair and improve our Museum enormously and, we hope, mean that our successors in office will not face such problems for many years to come. You will not be surprised to learn that our input into this has been by volunteers. It always is in Elgin Museum. We are most grateful to them all.

Because of this we will open slightly late but looking great! - and after a winter of continuing hard work we have done much in the Museum as you will read in the newsletter. Whenever I have visited there has been all sorts of interesting artefacts being worked on.

So now we start the season and this year it is the Year of Young People and, with our Teens and Tweens project, we have a great programme in the making.

The end of World War 1 is also to be commemorated in the Museum with a Poppy display. Already it is taking shape but you may wish to contribute to this. Please see details in the newsletter or get in touch with the Museum to find out more.

Finally we are once again very grateful to the Welsh Family for their generous support of The Moray Society and Elgin Museum. It is so pleasing to know we have this strong support and it reflects the similar efforts of all our volunteers. If you are reading this and can give us a few hours please do get in touch.

**Grenville S Johnston**  
**Hon President**

## **Learning and Outreach**

As mentioned in the last newsletter, we are delighted to welcome Jen Kelshaw to the Museum. After a short spell of familiarisation, Jen has quickly put together a wonderful programme for the rest of this year, which will contain activities for our existing Young Marvels as well as activities for teenagers and older participants.

The first events have already taken place and have proved extremely popular, in spite of the Museum being closed due to our building works.



*Children's 'In the Deep' session*



*Jen Kelshaw & Jenny Cook promoting Votes for Women*

Further activities planned for the year are mentioned below. If you, or your children or grandchildren, are interested, please see the museum website, closer to the event, in order to get up to date details or pick up a leaflet from the Museum.

### **Summer Activities Programme**

From opening, the Museum will have puzzles, a Toys and Play trail, costumes, selfie frame etc.

Fri 18 <sup>th</sup> May	Festival of Museums - 1 session for tots (1-5) and 1 for dementia sufferers.
Sat 19 <sup>th</sup> May	Festival of Museums – Museum Fun Day with games, toy making sessions and more.

### **Museum Mondays Picnic (12noon to 3pm)**

Mon 2 <sup>nd</sup> July	Nature Table and books –all ages Natural History trail – under 12's
Mon 9 <sup>th</sup> July	Taxidermy – all ages TBA – under 12's
Mon 16 <sup>th</sup> July	Teddy Bears picnic – all ages Young Evacuees – under 12's
Mon 23 <sup>rd</sup> July	When I grow up/When I was wee activity –all ages
Mon 30 <sup>th</sup> July	Fingerpaint Poppies – all ages
Mon 6 <sup>th</sup> Aug.	Design your own Banknotes – all ages

The Monday Picnic dates will be confirmed by 28<sup>th</sup> April – an email will be sent to members once they are confirmed.

### Tuesday Activities (12noon to 2pm)

Tues 4 <sup>th</sup> July	Under 12's Event: Object handling - Behind the Scenes
Wed 11 <sup>th</sup> July	12-18's Event: Museum Olympics – Behind the Scenes
Wed 18 <sup>th</sup> July	Under 12's Event: Victorian School room activities – Youth
Wed 25 <sup>th</sup> July	12-18's Event: Twitter Takeover – Youth
Wed 1 <sup>st</sup> Aug.	Under 12's Event: Money & Military – under 12's
Wed 8 <sup>th</sup> Aug.	12-18's Event – Weapons from the Collection – Money & Military

There will be more to come so do keep checking the Museum website – we will also send updates as necessary. If you have any questions regarding any events please contact Jen via [elginmuseumlearning@gmail.com](mailto:elginmuseumlearning@gmail.com)

## **Museum Assistant Report**

### **Spring 2018**

This season has not been without it's challenges – poor repairs in the past causing flooding in the rear gallery and stores, and the building works having an impact at times -one day I discovered the removal of external roof tiles was causing the beautiful gold leaf plasterwork from the main gallery ceiling to fall from its substantial height to the stairs and floor of the main gallery – I ought to stress this was immediately acted upon by the stone masons and architect Pinny Neill as soon as reported, but we had to have the centre of the main gallery shut off for a number of weeks.

This year, instead of volunteers coming and going at different times, we asked that as many as possible dedicate a Monday to helping behind the scenes so I could provide suitable training and supervision as we reorganised the East Store (natural history and archives) and attempt to make the North Store (archaeology, social history, art etc.) a safer environment to work in. I am exceedingly pleased with how well the project has been carried out, ensuring Spectrum compliant location and movement control at every stage.

My faithful Monday Crew consists of a team of willing and very flexible volunteers; I have highlighted just some of their specific tasks below:

- Helena Keyes – Museum Correspondence and accounts from 1836 to the present day
- Irene Lukkarinen – Art exhibitions 2018 and Aberlour Orphanage upstairs exhibition
- Jan MacWilliam – Purchase of land, building works, renovations, external works, contracts, plans, exhibition redisplay etc. from 1830 to present day
- Mary Allan – Events, activities, filing, volunteer hours
- Neil Kemp – North Store reorganisation and oversight, location and movement control, research on weaponry, building shelves
- Ritchie Mabon – location and movement control database, building maintenance
- Robert Wallen – East Store archive reorganisation and oversight, building of shelving, costume storage, filing, building maintenance
- Roger Pendergast – Artefact storage, location and movement control, manual labour

- Ron Reid – Sorting and storing costumes, artefact storage, location and movement control
- Stewart Halkett – Publicity, Moray Society Board, Civic Committee, Activities Committee, Management Committee and AGM Minutes, artefact storage, location and movement control
- Morag MacDonald – Archaeology and Press Cuttings



*Some of the Monday 'crew'*

I simply cannot believe the difference in the East and North Stores, and even the West Store has had a little loving care this month. In the months ahead, we will concentrate on rectifying issues we have discovered with incorrect numbering of artefacts, locating items that seem to have been put in the wrong box, and photographing the collection. We have 36,000 items so it will be an ongoing important mission; whilst I try to get my head around the amount of new archaeology we have acquired from treasure trove and ensure accessioning is kept up to date.

Additionally, working behind the scenes are:

- Jenny Cook and Mary Shand who have successfully completed another 3 upstairs display cases, this time depicting World War I in 1918; come and see the wonderful poppy display created using poppies from members of the public young and old which cascade over the banisters.
- Gayle Henderson has been busy stock checking, analysing shop sales and re-ordering for the year ahead, as well as managing internet shop sales and hall bookings.
- Jamie Baron and Sara Marsh have created a database of books located in the main office library and are swiftly moving on to reference those in the East Store, the Lumber Room and the Observatory – no small undertaking.
- Martin Cook is doing a wonderful job of redisplaying the Lepidoptera into a collection worthy of Scotland's oldest, continuously independent museum.
- Richard Winfield has started work typing up Curators diaries, trying to differentiate the meaning of various handwritten notes to record key events and activities that have taken place through the last 20 years.
- Having an interest in photography, an RAF and pathology background, Tony Winfield has just joined the team to help photograph objects in the collection. So far, Tony has photographed a large donation of dressing up clothes and is moving on to our collection of medals.



- Phillipa Currie, an archivist with University of the Highlands and Islands, has rejoined us for a time to assist with a University assignment and will fully archive our collection of orders, delivery notes and invoices from Watsons Moray Sawmills. I believe the Sawmills were located to the left of the roundabout between the railway and the mart, on Linkwood Road, Elgin. When the Sawmill buildings started to be demolished circa 1995, members of the public brought the letters to the museum in bin bags, full, having retrieved them from the street. The documents were listed on receipt and according to their box location but due to the enormity of the task and the specialist knowledge required, it is only now that they are being categorised into chronological and subject matter. It is hoped that this will make them more accessible to the general public and for outreach projects, with links to local businesses and international relations.



*Rob moves Pete the Pict*



*Pete & friend cleared to the cellar*

My sincere thanks go to all our volunteers for making this winter so enjoyable and thoroughly productive.

Thank you to all the volunteers who attended the coffee and cake session to prepare for the next open the season; we had a response from 40 volunteers. Thanks are due to Starbucks for providing coffee and bites, well done to Jenny for her new training idea and thank you Jenny, Mary Shand, Trisha Dalgarno and Heather C for your home baking – fantastic! An email will go out to all the volunteers after the training, to recap on what was said so if you have any questions thereafter, please get back to Jenny Cook, Volunteer Mentor and Heather Cruickshank, Volunteer Co-ordinator/Rota. We hope we can encourage new ones to join the ranks – we cannot open without you and certainly would not get the excellent feedback from Visit Scotland, and our Visitors – were it not for your diligence and professionalism at all times.

Heather Townsend,  
Museum Assistant

## **VOLUNTEERS URGENTLY NEEDED**

There are currently some essential Museum tasks that need to be picked up by volunteers willing to undertake a regular commitment and join the rest of the workers behind the scenes. For all these roles, training will be given. For Accreditation (essentially our registration with Museums Galleries Scotland, requiring us to comply with their standards), volunteers with specific tasks are required to have signed an agreement outlining the tasks involved.

We do need to spread the load and more deeply engage new volunteers in the running of the Museum – it is unlikely that we will be able to afford to employ a curator/manager and this is the only way to keep the show on the road.

1. Cashier – weekly banking of cash, including from the donations boxes, recording of monies.

2. Environmental controls – the Museum galleries and stores have to be controlled between certain parameters for temperature, humidity and light. There are monitoring devices – “humbugs” - which need to be downloaded onto the computer and the results monitored to see they are satisfactory. There are dehumidifiers that require monitoring for effective working.

**Janet Trythall**

## **Geology Group Spring Report**

The group's visit to Clashach and Spynie quarries with representatives from Scottish National Heritage and palaeontologists from National Museums Scotland reported in the last newsletter has led to two useful outcomes. Elsa Panciroli (a PhD student at NMS working on Early Mammals) wrote an article for *Earth Heritage*, SNH's Geological and Landscape Conservation newsletter, reviewing the need for SSSI designation for both quarries. Her report appears on pages 48 to 50 of the current volume and can be accessed on-line at: <http://www.earthheritage.org.uk/ehpdf/EH%2049%20-%20final%20draft.pdf>

In conjunction with the NMS staff, the group produced a poster for display in both Tennants main office and in the site office detailing examples of the fossils found at Spynie. It is hoped that this information will aid the workmen in identifying anything of interest; the block referred to in Elsa's article has also been moved close to the office by Gavin Tennant to make it more visible to staff and visitors to the quarry.

Recent work at the quarry has also revealed a new vein of galena, associated with the overlying Stotfield Cherty rock, and the EMGG worked with Rebecca Russell from Pitgaveny Estates to secure samples of the lead ore for the museum collection.

Elsa Panciroli made a return visit to the museum in February to view items from the Recognised Collection as part of her ongoing PhD studies. These were photographed in some detail for photogrammetric analysis and we look forward to seeing the results of her work in due course.

A PhD student from Bristol University who is working on macroevolution and jaw function in parareptiles has also been in contact with the museum. She plans to include a review of the skull from *Elginia* as part of this research so it is encouraging to see that our local fossils remain at the forefront of ongoing academic activity.



*Dave Longstaff from the EMGG handing over the poster for the site office to Gavin Tennant at Spynie Quarry. The block between them contains badly eroded plates of body armour (scutes) from *Stagonolepis* (see p 49 *Earth Heritage* **49**) that was moved from an abandoned part of the quarry to sit outside the quarry office.*

Matthew Harrop, our volunteer palaeobiologist, has now taken up employment in Oxford and the group will continue to support requests and visits from interested academics and students.

Moray Council granted planning permission to Tennants (Elgin) Ltd to extend operations at Clashach Quarry at the end of February and, as part of this work, the Moray Coastal Footpath will be re-routed. More information is available on-line at: <http://public.moray.gov.uk/eplanning/applicationDetails.do?activeTab=summary&keyVal=OYD7EUBGKQZ00>

Alison Wright

## **Data Protection**

New data protection laws come in to force next month and do affect to some extent how we handle personal data. As a summary of how this may affect you as a member, please note the following.

- One copy of mailing lists information (Moray Society and Young Marvels) will be held in a secure site and used only on password protected devices.
- We hold this information as a membership organisation and to allow us to communicate with our members about the Society and its events. We do not use this information to market to them nor do we pass it on to anyone else to do so.
- Legitimate interest between the member and the Moray Society is implied on completion of a membership form.
- The default method of contact is email, where no email address is supplied correspondence will be postal. Members will be given the opportunity to opt-out of being contacted by us whenever we email them, apart from contact about their membership.
- We will audit the data we hold on an annual basis, deleting anyone who has cancelled their membership, asked to be removed or is deceased.
- The Data Protection Officer for the Moray Society is Bill Dalgarno. Enquiries will be acknowledged within 72 hours and respond to within 28 days.

## **Moray Society Prize Draw**

The Prize Draw has now been running for sixteen years and during that time has diverted almost £15,000 into the Moray Society current account. This total includes donations submitted through the Prize Draw fund but does not take into account any further income accrued from Gift Aid generated by eligible donations.

This has been of considerable benefit to our daily running expenses and continues to be so, given the huge inflationary price rises on all our utility bills.

Tickets for the draw are only available to Moray Society members due to current legislation. I would like to ask any member who does not have a ticket to consider the benefits derived by the Society from those sales. There is no limit to the number of tickets available.

The price of the tickets remains unchanged and at present there are 78 tickets in circulation at £10 each. These are all eligible for the 12 prizes during their lifetime (1 year/4 draws with 3 prizes each).

All income generated by the draw goes directly into Moray Society funds apart from the prize money paid to the lucky ticket holders.

Please address any questions or applications to me at the Museum (or email [mabritch@keme.co.uk](mailto:mabritch@keme.co.uk), or tel 01309 673597)



**Moray Society Prize Draw**

Please allocate me ..... tickets in the Moray Society Prize Draw @ £10.00 each.

\*I enclose my payment of £.....

\*Please forward me a standing order mandate

Name.....

Address.....

Post Code..... \*please delete if inappropriate

Please address any questions or applications to me at the Museum (or tel 01309 673597).

**Ritchie Mabon,**  
**Prize Draw Co-ordinator**

## **AGM PAPERS**

### **Notice of The Moray Society Annual General Meeting 6.30 pm Friday 27th April 2018 at Elgin Museum *DRAFT***

#### Agenda:

1. Welcome from the President, Grenville Johnston (Chair)
2. Apologies for absence
3. Minutes of AGM 2017 - for approval
4. Matters arising from above
5. President's written report on the activities of the Society (Grenville Johnston)
6. Receive the Financial Report, including Accounts for the year ending 31<sup>st</sup> December 2017 and report of the independent financial examiners, Ritsons, Chartered Accountants, Elgin (Treasurer and Company Secretary, Graham Robertson)
7. Appointment of Ritsons, Chartered Accountants, Elgin as independent financial examiner for 2018.
8. Board membership - annual election  
The following existing Trustees are resigning and standing for re-election having been duly proposed by two Ordinary Members. See notes for the Agenda:  
Grenville Johnston  
Janet Trythall  
Bill Dalgarno  
Edna Cameron  
Rebecca Russell  
Mary Shand  
Graham Robertson  
Claire Herbert  
Donna Skelly  
And new candidate member, Caroline Webster.
9. Fixing of annual subscriptions for the categories: Ordinary, Family, Junior, Student, Life, Corporate membership. The Board recommends the subscriptions remain as:  
Ordinary member not paid by Standing Order, £30 (otherwise £25).  
Family member not paid by Standing Order, £50 (otherwise £40)  
Junior (Young Marvel) - a single joining fee of £1, not an annual subscription.
10. AOCB
11. Close

The timetable for the evening of the AGM: NB Entry for the evening will be via the main Museum entrance.

5 – 8.30 pm. Art preview on the Mezzanine floor. Artist: Frances Innes. "Hazy Horizons". Refreshments.

6.30 – 7 pm. AGM in Side Hall.

7.30 – 8.30 pm. Lecture in Side Hall. "CARS: Opportunities and Challenges" by Pinny Neill, Architect with LDN who has been the project manager for the restorative building works on Elgin Museum over the winter, and partly funded by Elgin's Conservation Area Regeneration Scheme with support from LEADER. Come and hear about the very unexpected challenges experienced not only for our building but elsewhere in the town. Entry free but donations welcome.

## **The Moray Society Annual General Meeting 6.30 pm 28<sup>th</sup> April 2017 at Elgin Museum**

### **1. Welcome from the President (Chair)**

Grenville Johnston (GSJ), President, welcomed those present.

### **2. Present and absent (name lists in file)**

26 members present

9 apologies for absence

In attendance: Museum Assistant

### **3. Minutes of the AGM of 2016 – accuracy: Agreed nem com**

### **4. Matters arising from AGM minutes 2016 – none**

### **5. President's report**

He referred to the regular updates to members in the Newsletters for which reason he had not prepared a written report. He made the following remarks about the Museum and the Society:

- He noted with regret the death of Jenna Shaw, past-President of The Moray Society and longstanding supporter of the Society as a local Councillor and Moray Society member.
- Di Hannan, our Education/Outreach Officer, has left us at short notice with her husband's posting south. This is a huge loss as she made an outstanding contribution to our engagement with children and families. We are currently seeking funding and a replacement.
- The opening day, April Fools' Day was a great success with 170 visitors enjoying jesters, learning circus skills and telling old jokes.
- This is the Year of History, Heritage and Archaeology and we have a full programme of events, with family activities, historical visits and walks and culminating in the archaeology conference on 4<sup>th</sup>/5<sup>th</sup> November, with some contributory funding from HLF.
- Volunteers for front-of-house duty – we struggle some weeks to keep open as we need two per half day session, 6 days a week. There is no need to be a member of the Moray Society although we always hope volunteers will chose to support us by membership as well. Forms are available at the back of the Hall and on the website and the Volunteer Mentor will make sure applicants are comfortable in their role. It can be fun!
- Membership stands at 247 Ordinary members, 63 Life members. Unfortunately, although we have new members this year, their number is exceeded by the losses, usually because of death. Young Marvels have 160 members, an increase of 20%.

- In summary, the Museum is in great heart, all due to Heather Townsend, Museum Assistant, and the volunteers. Despite the challenges, the beauty of it is we somehow cope.

6. Financial report (Ken Ferguson) – see statement of income/expenditure and balance sheet to year end 31/12/2016 (Extracts from full accounts examined by Ritsons, and ready for presentation to OSCAR – full copies can be seen on request and will be on the OSCAR and Companies House websites.) See full notes prepared by Ken Ferguson, Treasurer and Company Secretary.

In summary, while our finances show a surplus in unrestricted funds, we still require to have some £45-50k annually to run the museum. We no longer receive direct financial support from Moray Council, and the consequent anonymous donation was intended to cover our anticipated £15k per annum deficit over the following 3 years. The majority of our other funds are restricted and not available for general maintenance and outgoings. Apart from the salaries of the part-time Museum Assistant and Janitor, any wages, special events or capital expenditures are funded from project grants whenever possible. Donations have been most welcome, as has the return from investments, but they are an unpredictable income for the future.

Adoption of Treasurer's report: 1. Mary Byatt 2. Bill Dalgarno. Agreed nem com.

7. Appointment of Ritsons, Chartered Accountants, Elgin as independent financial examiners for 2016 – Agreed nem com.

#### 8. Board membership

(a) Resignations: under our revised Constitution, all Trustees resign at the AGM. Ken Ferguson, Phil Dacre, Angela Monro and Marion Yool were not standing for re-election and were sincerely thanked for their contributions as Board members.

(b) All the existing Trustees offered themselves for re-election and were duly re-elected. Notes for this Agenda item were circulated with the Agenda, including an indication of the candidates' background or skills, and individual Proposers and Seconders:

Grenville Johnston (President)  
 Janet Trythall (Vice-president)  
 Graham Robertson (new Treasurer and Company Secretary)  
 Bill Dalgarno  
 Edna Cameron  
 Mary Shand  
 Rebecca Russell  
 Claire Herbert  
 Donna Skelly (new candidate)

Agreed nem com.

9. Special Resolution to amend Article 9 of the existing Articles of Association to say: "The Board shall meet as soon as practicable immediately after each AGM to appoint the Office-Bearers from the Board (all or any of whom can be Co-opted Trustees), usually being the President, Vice President, Secretary and Treasurer. Unless the Board of Trustees at any time resolves otherwise, each Office-Bearer shall hold office for a period of three years, provided that he or she remains a Trustee for that whole period. At the end of his or her period the Office-Bearer shall be capable of re-appointment for a further three years, but no Office-Bearer can serve more than six years in office,



without at least one term out of office before being eligible for reappointment again, unless the Board of Trustees at any time resolves otherwise."

Proposed: The Moray Society Board. Agreed: nem com.

11. Fixing of annual subscriptions for the categories: Ordinary, Family, Junior, Life, Corporate membership. The Board recommends the subscriptions to remain as:  
Ordinary member not paid by Standing Order, £30 (otherwise £25).  
Family member not paid by Standing Order, £50 (otherwise £40)  
Junior (Young Marvel) - a single joining fee of £1, not an annual subscription.  
Agreed nem com.

12. AOCB:

i) Double glazing – Mary Byatt asked whether consideration had been given to double glazing the large window in the Main Gallery to save heat loss. GSJ said that it was understood that this would not be possible because of the listed status of the building. Claire Herbert (Board member and Aberdeenshire Council archaeologist) endorsed this view and also commented that changes to the internal environment need to be made with caution. ACTION: GSJ will make enquiries.

ii) CARS project – GSJ gave an update about The Society's position with regard to this project for the restoration of the frontage of buildings in Elgin High Street and South Street. The grants were originally offered for only 50% of the cost; it was unrealistic for us to find 50% of the several £100k total. The Board is now looking at a resubmission with scaled down works, potentially backed by an anticipated far higher % contribution from CARS.

iii) No 3 High Street – The President still has a strong desire to restore and bring into use the upstairs of No.3 and the feasibility is under active deliberation.

iv) Ken Ferguson, retiring Treasurer/Company Secretary was thanked heartily for his work on our behalf, particularly handling the complexities of our grant/ring-fenced funding, and at the outset, getting our accounts into an exemplary format and up to date with OSCR, and then maintaining this record.

To fulfil his long expressed wish to see Lego Picts in the Museum, he was presented with a diorama of the Battle of Mons Graupius, created by Claire Herbert.

There being no other business, the meeting closed at 1900.

It was followed by drinks and nibbles, and at 1930 by a lecture, **A Taste for Indian Sculpture: India, Moray and Elgin Museum** by Professor Richard Jeffrey, University of Edinburgh and Friederike Voigt, Senior Curator, Middle East & South Asia, National Museums Scotland - a follow up to the donation of Elgin Museum's Hindu sculptures to NMS at our AGM 2016.

Janet Trythall 30/4/2017

PLEASE NOTE!

Other papers and copies of the accounts will be available for viewing in the Museum prior to the AGM, from Monday 23<sup>rd</sup> April. If you have any queries regarding the AGM, do not hesitate to contact [curator@elginmuseum.org.uk](mailto:curator@elginmuseum.org.uk) for the attention of Janet Trythall, Bill Dalgarno or Graham Robertson.

## **Open University Geological Society trip to Kemnay 14<sup>th</sup> March 2018.**

Dave and Janet, from the Elgin Museum Geology Group, and special guest Davie Milne, joined the OUGS trip to Kemnay in March. After being safety briefed and togged up in helmets and hi-vis jackets, a group of nine had a tour of the facilities and quarry led by Andy Henderson, the quarry manager. We toured three separate factories where different Fyfestone products are manufactured using varying proportions of water, granite and cement. Andy was obviously very proud of the plant, its efficiency (from recycling of defective blocks to variable drive compressors) and safety record.

Although now owned by Breedon Aggregates, and granite extraction is no more, the Kemnay site still retains elements of its history since the quarry's expansion by John Fyfe in 1858. We heard of the fundamental game changers in quarrying practice originating from Kemnay: steam derricks, electrical blasting and Blondins – John Fyfe is said to have seen Charles Blondin cross the Niagara Falls, or did he get the idea from a postman on Deeside who had seen an endless rope method of delivering mail? Kemnay granite went to build London's Tower Bridge, Holborn Viaduct, Aberdeen's Bon Accord Centre and Marischal College and most recently, the Scottish Parliament building and Kemnay masons' expertise was exported for the building of Sydney Harbour Bridge.

Now there is no market with the availability of cheap Chinese granite, and since the 1960s, the business has been based on concrete-based mixtures rather than natural granite stone.



*Group beside quarry, Janet taking notes.  
Photo: Dave Longstaff*

There are examples of the early days on site: the 1880s quarrymen's housing, a J.W.Henderson crane, a granite block with the original seating hole for lifting with a device called a "lewis", "Spion Kop" the foundation for one of the Blondins and John Fyfe's house under which are said to be Viking graves.

The original quarry is now flooded and has a maximum depth of 90m. It was recently investigated by an ROV which didn't get to the bottom. Peregrines nest on the cliff. The pH is said to be 14 which accounts for a lack of fish. In its depths is a WWI German field gun, one of many such relics of the war distributed to be war memorials but often promptly dispatched as unwanted reminders. Some of the actual geologists on the trip carried away samples of granite from the spoil heaps, their acquisitive instincts limited by their strength! JT

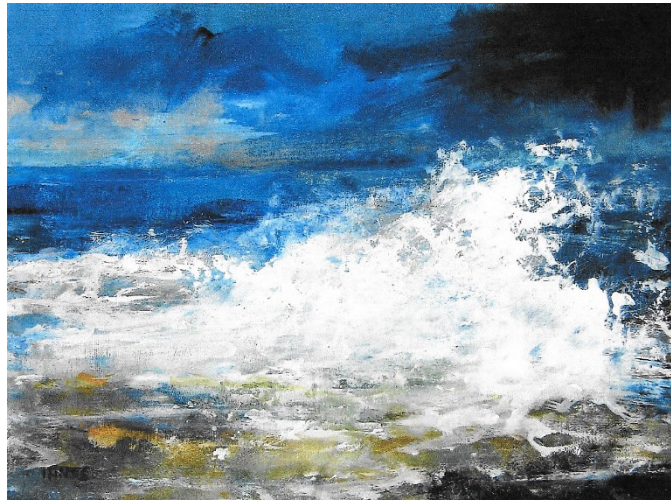
# Grand Opening Event

Due to the ongoing conservation works on the outside of the Museum, we have had to postpone the opening of the Museum until the end of April instead of the planned Good Friday opening. The opening now coincides with the AGM of the Moray Society so we have put together an interesting evening for members.

## Friday 27<sup>th</sup> April

**ACCESS ALL EVENING VIA THE MUSEUM, NOT THE HALL**

5pm to 8.30pm 'Meet the Artist' Art Preview and Refreshments in the Museum



### Hazy Horizons by Frances Innes

Exhibition from 28<sup>th</sup> April to 9<sup>th</sup> June

6.30pm Moray Society AGM in the Hall from 6.30 pm – 7 pm.

7.30pm CARS - opportunities and challenges  
\*Elgin's Conservation Area Regeneration Scheme



A talk by Pinny Neill MArch Bsc (Hons) RIAS RIBA Conservation Accredited Architect  
at LDN Architects Entry Free. Donations welcome.



## Poppy Cascade

Jenny Cook and I have been working on the last of the display cases which have followed the Great War years. The Armistice was signed in November 1918 but the war didn't officially end until 1919, with the Treaty of Versailles. We hope to do a case next year which will look at the aftermath of the war, but this is the last time we'll put on the grand show!

As a dramatic flourish to finish we thought of a poppy cascade coming over the upstairs bannister and flowing down the wall. It should be eye-catching and eloquent – in theory. We contacted Poppy Scotland to see what they thought of the idea, and their Inverness marketing lady, Frances Beveridge, was very enthusiastic. She came to the museum on 23rd January to look around and to discuss the plan, bringing a variety of poppies for us to use as a starting point. She offered to contact Moray Education Department to invite schools to make poppies, perhaps with a dedication or poem on them, to add to the cascade and she intends to help us publicise the display when it's finished.

The Press and Journal have also shown interest, with a piece on our plan appearing a few weeks ago. The general public have been asked to hand in their own poppies before the end of March and that will give us time to attach them to the backdrop for our opening at the end of April.

If it all goes to plan, the ties holding the netting to the bannisters are firm, the stepladders are big enough, lots of poppies come in, Jenny and I manage to attach them in time....it should be magnificent! Fingers crossed.

Mary Shand



*Case 11 with start of poppy cascade*

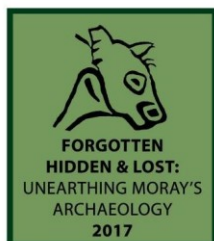


*Planned cascade from the floor*



## 2017 Archaeology Conference Proceedings – available now!

The publication of the proceedings of Elgin Museum's 2017 Archaeology Conference is now available to purchase. This 145-page volume includes 9 papers from our conference speakers on 4th November 2017, including Dr Fraser Hunter and Dr Gordon Noble, as well as 5 papers from our field events on 5th November 2017, featuring insights on the stained glass and carved stones of Elgin Cathedral and the architecture and archaeology of Elgin's historic town centre.



**Forgotten, Hidden & Lost:**  
**unearthing Moray's archaeology**  
Proceedings of the Elgin Museum Archaeology  
Conference 2017

4th November 2017  
Alexander Graham Bell Centre (UHI),  
Elgin



The publication can be purchased online at <http://elginmuseum.org.uk/yhha2017> at a cost of £7 (plus £2 UK p&p). If you live locally to Elgin Museum, and would like to collect a copy in person please contact us by email ([curator@elginmuseum.org.uk](mailto:curator@elginmuseum.org.uk)) to request a copy and arrange a collection time. If you live outside the UK and would like to order a copy, please contact us by email to customise your order.

### Not a member?

As you can see from the newsletter, there are lots of activities happening for members of the Moray Society. Why not become a member using our special offer. All you have to do is fill in a standing order (next page) and send it to The Membership Secretary, Elgin Museum, 1 High St., Elgin. IV30 1EQ. Membership rates are £10 for 2018 then £25 per annum for a single membership and £15 for 2018 then £40 per annum for a family of up to two adults and three children.

**GIFT MEMBERSHIP** I would like to apply for membership for the undernoted. I understand that the membership secretary will send me a membership pack and an acknowledgement of the application. Below are my bank details. The membership is in favour of:

Name.....

Address.....

..... Post code.....

Email address.....



## STANDING ORDER MANDATE

To \_\_\_\_\_ Bank (Your bank)

Please set up the following Standing Order and debit my/our account accordingly

.....

1. Your account details

Account name \_\_\_\_\_ Account number \_\_\_\_\_

Account holding branch \_\_\_\_\_ Sort code \_\_\_\_ - \_\_\_\_ - \_\_\_\_

.....

2. Payee details

Organisation you are paying: The Moray Society

Payment reference (to be completed by Moray Society) \_\_\_\_\_

Bank of Scotland, Elgin

Sort code 80-06-66

Account No 00476195

.....

3. About the payment

Date and amount of first payment Date\_1<sup>st</sup> \_\_\_\_\_ 2018 £ \_\_\_\_\_

Followed by, annually, until advised Date 1<sup>st</sup> January 2019 £ \_\_\_\_\_

(allow 3 working days for receipt)

.....

4. Confirmation

Customer signature(s)

1. \_\_\_\_\_

2. \_\_\_\_\_

Date \_\_\_\_\_

## ELGIN CATHEDRAL ARMORIAL PANEL

In 2016 Historic Environment Scotland (HES) opened a new permanent exhibition within the towers of Elgin Cathedral. Prior to display, all the stones were expertly conserved by HES staff. One of the panels has thrown up some unexpected questions that volunteers within the Elgin Museum Geology Group are trying to answer – can YOU help?

The panel was located in a wall of the cathedral transept and displays a central coat of arms surrounded by foliate scrolls. The coat of arms has four panels displaying three geese in the upper dexter quadrant, a rectangular cushion adjacent to possible traces of a lost star in the quadrant below, a cockerel in the lower sinister quadrant and a falcon's head in the quadrant above. The coat of arms is surmounted by a helmet and sits above two small heads with rings in their mouths. The panel measures 73 cm x 70.5 cm x 15.5 cm and weighs 138 kg.

To date, the Lord Lyon of Scotland has been unable to identify the coat of arms; the Marjoribanks crest includes a single horizontally orientated cushion and the faint trace of the star in the same quadrant strengthens this possible connection. This family is not known to be important locally and thus the panel is possibly linked to a 17th Century member of the Dunbar family. Their crest includes three tasselled cushions, but orientated with the corners N-S-E-W.

The panel is carved in a dark grey, very fine-grained sandstone that appears to be exotic to Moray as it does not match any of the local lithologies or stone used elsewhere in the cathedral. Analysis shows that the rock contains an unusual clay mineral, sepiolite, which staff at HES and the British Geological Survey have been unable to match.

Have you seen this crest, or its components, elsewhere in your travels? Perhaps on a tombstone or carved above a doorway or mantelpiece?



If you can help, please contact Elgin Museum: [curator@elginmuseum.org.uk](mailto:curator@elginmuseum.org.uk)

Dr Alison Wright



*Behind the scaffolding – a foretaste of how the Museum will look*



*Ducks on the move!*



*Phillippa cataloguing*

### **Beginning June NEW ART EXHIBITION**

#### **Margins and Perceptions by**

**Mary Black and Jennifer Ebdy**

**Saturday 16th June – Thursday 26th July 2018**

**Elgin Museum**

*Jenny and Mary met in 2005, when they were both art tutors at the same venue. Since then, they have continued to meet up to exchange news and ideas about art which led to this joint exhibition.*





Summer's Farewell, Mary Black



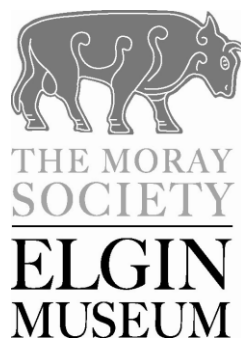
by Jennifer Ebdy

This exhibition is a joint exhibition from artist Mary Black and sculptor Jennifer Ebdy.

Mary's source of inspiration for the paintings on display in this exhibition comes from the coastline around Moray and the north-east of Scotland. Mary does not paint one particular place or time, but concentrates on the patterns and the character of these coastal fringes which continually change through the seasons and weather, repeating in infinite variations. Since graduating in 1999, she has exhibited in art galleries in Dundee, Angus, Aberdeen, Moray, Inverness, Ross-shire and New Zealand.

Throughout her career, Jennifer Ebdy has been interested in the shape and form of things. For many years she worked as a theatre designer, creating stage sets and costumes for over 40 theatre productions. Later, with a young family, she moved to Applecross and started a second career developing and delivering art-based projects and activities. However, throughout her working life her passion for sculptural form has remained. She has continued to create her own work using clay as her medium of choice, but also experimenting with other materials. With age comes a wealth of experience, and Jennifer use these experiences to inform her work. She also enjoys drawing ideas from interesting, varied and striking objects, people and images, and through those ideas explores colour, texture and form.

For more events, walks, family activities, and learning opportunities: keep an eye on our web site, facebook and twitter, and in "Town and Country" under "Elgin" in The Northern Scot.



1 High Street, Elgin, Moray, IV30 1EQ – Tel: 01343 543 675 – Email: [curator@elginmuseum.org.uk](mailto:curator@elginmuseum.org.uk)  
**ELGIN MUSEUM** – Scotland's oldest independent Museum – Established 1836

**The Moray Society: Company No 106529 Charity No 017546**