

Elgin Museum Natural History Layout

The Natural History Layout comprises amphibians, birds, insects, and mammals depicted in a woodland diorama; most of the creatures are native to Scotland and were collected and prepared during the late 19th and early 20th Centuries. Taxidermy of specimens allowed people to see their native fauna (and more exotic species) in a time before wildlife photography and digital imagery made these animals familiar to all. Today, some of these creatures, such as the wild cat and the capercaillie, are threatened with extinction as human activity encroaches upon their natural habitat. This makes it even more important that natural history specimens are used to educate people about the environment.



From L-R: Golden eagle; Tawny owl; Kestrel; Badger; Long-eared bat; Reeve's pheasant; Great-spotted woodpecker

In our diorama, you will find:

Amphibians:

Frog (ELGNM: L1989.21)

Toad (ELGNM: 1989.27)

Birds:

- Blackbird (ELGNM: L1989.19)
- Buzzard (ELGNM collection)
- Capercaillie (ELGNM: L1988.16)
- Coal tit (ELGNM: 1989.26)
- Crossbill (ELGNM: L1988.19)
- Goldcrest (ELGNM: 1989.28)
- Golden eagle (ELGNM collection)
- Great spotted woodpecker (ELGNM 1989.24)
- Jay (ELGNM collection)
- Kestrel (ELGNM collection)
- Osprey (ELGNM: 1854.1.1)
- Red kite (ELGNM: 1854.1.2)
- Reeve's pheasant (ELGNM: 1978.417) (a non-native failed introduction to Scotland)
- Siskin (ELGNM: 1989.25)
- Sparrowhawk (ELGNM: L1989.16)
- Tawny owl (ELGNM: L1988.17)
- Tree-creeper (ELGNM: L1989.20)



Male and female capercaillie; wild cat behind and crossbill in the tree

Insects:

Emperor moth (ELGNM: 1930.10.195.1/12)
Kentish glory moth (ELGNM: 1930.10.194.1/12)
Oak eggar moth (ELGNM: 1930.10.196.1/12)
Orange tip butterfly (ELGNM: 1930.10.59.1/5)
Pearl bordered fritillary butterfly (ELGNM: 1930.10.7.1/1)
Pebble hook (tip) moth (ELGNM: 1930.10.201.1/12)
Pine hawk moth (ELGNM collection)
Scotch argus butterfly (ELGNM: 1930.10.28.1/3)
Speckled wood butterfly (ELGNM: 1930.10.29.1/3)
Speckled yellow moth (ELGNM: 1978.829.281.5/16)
Wood tiger moth (ELGNM: 1930.10.153.1/10)
Wood wasp (ELGNM: 1930.10.95.1/8)



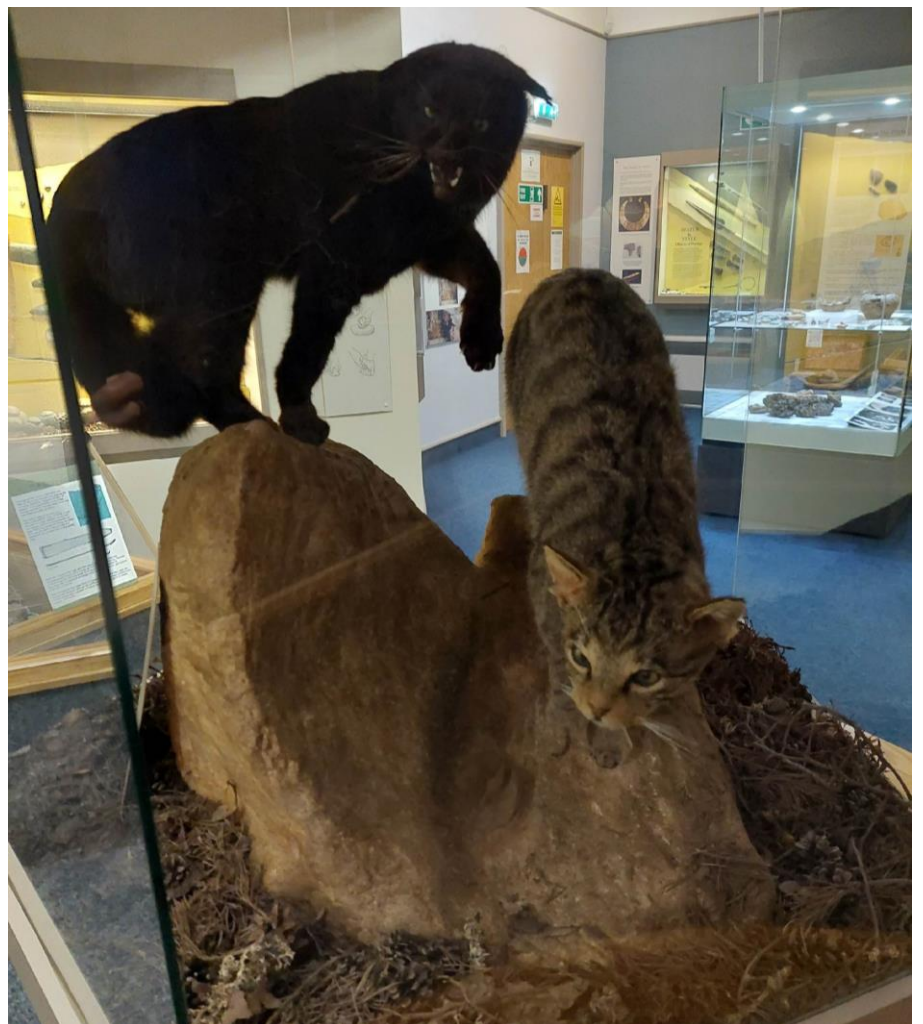
Scotch argus butterfly (<https://www.ukbutterflies.co.uk/species.php?species=aethiops>)

Mammals:

Badger (ELGNM: 1979.48)
Fox (ELGNM: L1979.48)
Long-eared bat (ELGNM: L1989.18)
Mole (ELGNM collection)
Pine marten (ELGNM: 1930.12)
Pipistrelle bat (ELGNM: L1988.20)
Rabbit (ELGNM collection)
Red squirrel (ELGNM: L1989.17)
Stoat (ELGNM: L1989.22)
Wild cat (ELGNM: 1989.23)



Male fox



Wild cats